

- Micrometer type adjustment
- Fine control
- Non-return and needle valves



- Screw driver adjustment
- Rugged bodies
- High flow rate
- High flow by-pass
- Wide range of sizes



Operating and additional information

Micrometer flow control valves

Operating pressure: 0 to 17 bar
 Operating temperature: -40°C to +80°C
 Body material: Brass
 Control knob: Aluminium
 Adjustment mode: Knurled knob

Heavy duty inline flow control valves

Operating pressure: 0 to 17 bar for air or oil
 Operating temperature: -18°C to +82°C
 Body material: Brass
 Control knob: Brass
 Adjustment mode: Screw driver adjustment

Flow Control with By-pass



Symbol



Thread	Number of turns	Qmax input at 6 bar, l/min	Weight g	Order code
G1/8	5	300	76	337A
G1/4	6	780	134	337B

Flow Control with By-directional Control

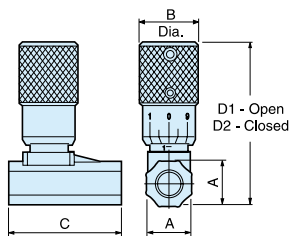


Symbol



Thread	Number of turns	Qmax input at 6 bar, l/min	Weight g	Order code
G1/8	5	300	78	338A
G1/4	6	780	132	338B

Micrometer Flow Control Valves - Dimensions

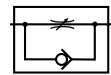


Order code	Port size	Dimensions (mm)				
		A	B	C	D1 open	D2 closed
337A	G1/8	14,5	19	37,5	51,5	46
337B	G1/4	17,5	19	37,5	58	51
338A	G1/8	14,5	19	37,5	51,5	46
338B	G1/4	17,5	19	37,5	58	51

Standard type

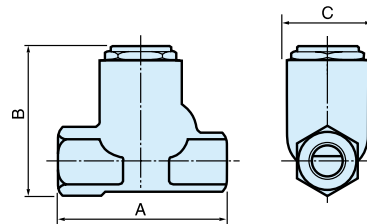


Symbol



Thread	Number of turns	Qmax input at 6 bar, l/min	Weight g	Order code
G1/8	6	1320	114	B3250X
G1/4	5	2880	224	B3250AB
G3/8	5	6300	378	B3250BB
G1/2	5	7680	792	B3250CB
G3/4	4,5	10680	1300	B3250DB

Flow Control Valves, Standard Type



Order code	Port size	Dimensions (mm)		
		A	B	C
B3250X	G1/8	44	40	21
B3250AB	G1/4	57	51	28
B3250BB	G3/8	68	64	35
* B3250CB	G1/2	79	78	41
B3250DB	G3/4	90	92	51

* Low operating temperature -40°C @ 10 bar